

rosie knits presents...



skill level: intermediate

ALLIGATOR

fingerless mitts

by Jocelyn J. Tunney

MATERIALS

Karabella Yarns
Aurora Bulky (100%
extrafine merino
wool; 56yds/50g).
3 skeins; shown in
color 1609.
US 10.5 (6.5 mm) ntl,
or size needed to
obtain gauge.
Darning needle,
cable needle,
stitch markers
8 - 1" buttons

GAUGE

15 sts and 20 rows =
4" in St st.

FINISHED

MEASUREMENTS

12" long, 9" below
elbow, 8" at top of
hand



ABBREVIATIONS

BO = bind off	ntl = needle
cbl = cable	p = purl
CO = cast on	pm = place marker
k = knit	RS = right side
k2tog = knit 2 stitches together	sl = slip
kwise = knitwise	slm = slip marker
m = marker	ssk = slip slip knit
m1 = lift strand between stitch just worked and next st from front to back with left needle, knit through back loop.	sts = stitches
	WS = wrong side

ALLIGATOR

fingerless mitts.....

DIRECTIONS FOR LEFT MITT

CO 17sts, pm, CO 16sts, pm, CO 5sts. (38 sts total).
 Row 1, 9, 17, 25, 33, 41, 49 (WS): Sll kwise, p1, k1, p1, k1, slm, p to m, slm, work Row 1 of Chart A.
 Row 2, 10, 18, 34, 42, 50, 58 (RS): Work row 2 of Chart A, slm, k to m, slm, p1, k1, p1, k1, p1.
 Row 3, 11, 19, 27, 35, 43, 51, 59: Sll kwise, p1, k1, p1, k1, slm, p to m, slm, work Row 3 of Chart A.
 Row 4, 28, 36, 52, 60: Work Row 4 of Chart A, slm, k to m, slm, p1, k1, p1, k1, p1.
 Row 5, 13, 21, 29, 37, 45, 53, 61: Sll kwise, p1, k1, p1, k1, slm, p to m, slm, work Row 5 of Chart A.
 Row 6, 22: Sll kwise, k1, p1, k1, BO1, p1, work Section A of Row 6 of Chart A, slm, k to m, slm, p1, k1, p1, k1, p1.
 Row 7, 23, 39: Sll kwise, p1, k1, p1, k1, slm, p to m, slm, work Section A of Row 7 of Chart A, p1, k1, CO1, k1, p1.
 Row 8, 16, 24, 40, 48: Work Row 8 of Chart A, slm, k to m, slm, p1, k1, p1, k1, p1.
 Row 12, 20: Work Row 4 of Chart A, slm, ssk, k to m, slm, p1, k1, p1, k1, p1.
 Row 14, 30, 46, 54, 62: Work Row 6 of Chart A, slm, k to m, slm, p1, k1, p1, k1, p1.
 Row 15, 31, 47, 55: Sll kwise, p1, k1, p1, k1, slm, p to m, slm, work Row 7 of Chart A.
 Row 26: Work Row 2 of Chart A, slm, ssk, k to m, slm, p1, k1, p1, k1, p1.
 Row 32: Work Row 8 of Chart A, slm, ssk, k to m, slm, p1, k1, p1, k1, p1.
 Row 38: Sll kwise, k1, p1, k1, BO1, p1, work Section A of Row 6 of Chart A, slm, ssk, k to m, slm, p1, k1, p1, k1, p1.
 Row 44: Work Row 4 of Chart A, slm, m1, k to m, slm, p1, k1, p1, k1, p1.
 Row 56: Sll kwise, k1, p1, k1, BO1, p1, work Section A of Row 8 of Chart A, slm, k to m, slm, p1, k1, p1, k1, p1.
 Row 57: Sll kwise, p1, k1, p1, k1, slm, p to m, slm, work Section A of Row 1 of Chart A, p1, k1, CO1, k1, p1.
 After working Row 62 (final row), BO in pattern.

Chart A

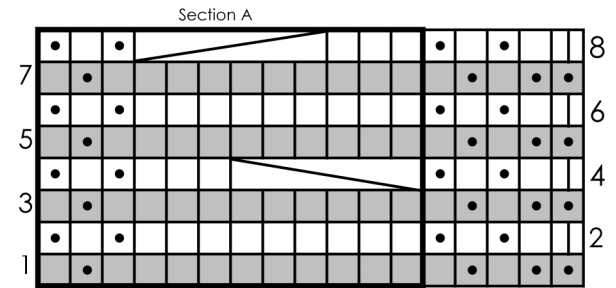
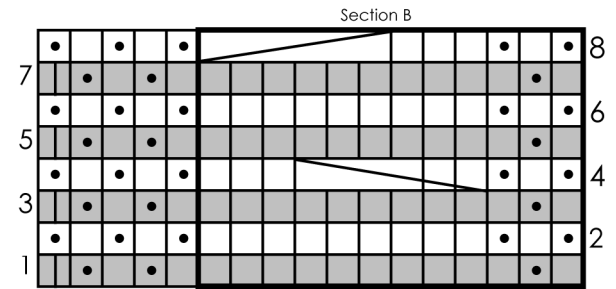


Chart B



- k on RS, p on WS
- sl st kwise
- p on RS, k on WS
- sl 3 sts to cable ndl, hold in front, k 3 sts from ndl, k 3 sts from cable ndl.
- sl 3 sts to cable ndl, hold in back, k 3 sts from ndl, k 3 sts from cable ndl.

DIRECTIONS FOR RIGHT MITT

CO 5sts, pm, CO 16sts, pm, CO 17sts. (38 sts total).
 Row 1, 9, 17, 25, 33, 41, 49 (WS): Work Row 1 of Chart B, slm, p to m, slm, k1, p1, k1, p2.
 Row 2, 10, 18, 34, 42, 50, 58 (RS): Sll kwise, k1, p1, k1, p1, slm, k to m, slm, work Row 2 of Chart B.
 Row 3, 11, 19, 27, 35, 43, 51, 59: Work Row 3 of Chart B, slm, p to m, slm, k1, p1, k1, p2.
 Row 4, 28, 36, 52, 60: Sll kwise, k1, p1, k1, p1, slm, k to m, slm, work Row 4 of Chart B.
 Row 5, 13, 21, 29, 37, 45, 53, 61: Work Row 5 of Chart B, slm, p to m, slm, k1, p1, k1, p2.
 Row 6, 22: Sll kwise, k1, p1, k1, p1, slm, k to m, slm, work Section B or Row 6 of Chart B, p1, k1, p1, BO1, k1, p1.
 Row 7, 23, 39: Sll kwise, k1, CO1, k1, p1, work Section B or Row 7 of Chart B, slm, p to m, slm, k1, p1, k1, p2.
 Row 8, 16, 24, 40, 48: Sll kwise, k1, p1, k1, p1, slm, k to m, slm, work Row 8 of Chart B.
 Row 12, 20: Sll kwise, k1, p1, k1, p1, slm, k to 2 sts before m, k2tog, slm, work Row 4 of Chart B.
 Row 14, 30, 46, 54, 62: Sll kwise, k1, p1, k1, p1, slm, k to m, slm, work Row 6 of Chart B.
 Row 15, 31, 47, 55: Work Row 7 of Chart B, slm, p to m, slm, k1, p1, k1, p2.
 Row 26: Sll kwise, k1, p1, k1, p1, slm, k to 2 sts before m, k2tog, slm, work Row 2 of Chart B.
 Row 32: Sll kwise, k1, p1, k1, p1, slm, k to 2 sts before m, k2tog, slm, work Row 8 of Chart B.
 Row 38: Sll kwise, k1, p1, k1, p1, slm, k to 2 sts before m, k2tog, slm, work Section B of Row 6 of Chart B, p1, k1, p1, BO1, k1, p1.
 Row 44: Sll kwise, k1, p1, k1, p1, slm, k to 1 st before m, m1, k1, slm, work Row 4 of Chart B.
 Row 56: Sll kwise, k1, p1, k1, p1, slm, k to m, slm, work Section B of Row 8 of Chart B, p1, k1, p1, BO1, k1, p1.
 Row 57: Sll kwise, k1, CO1, k1, p1, work Section B or Row 1 of Chart B, slm, p to m, slm, k1, p1, k1, p2.
 After working Row 62 (final row), BO in pattern.

FINISHING

Sew buttons on ribbed edge to align with corresponding buttonholes. Weave in ends.