

Cascading Leaves Scarf

Directions

Pattern Setup:

Using 2 strands held together, CO 3 sts.

Row 1: p1, k2.

Row 2: p2, k1.

Row 3: p1, mlp, k1, mlk, k1. (5 sts.)

Row 4: p3, k2.

Row 5: p2, mlp, k1, mlk, k2. (7 sts.)

Row 6: p4, k3.

Row 7: p3, mlp, k1, mlk, k3. (9 sts.)

Row 8: p5, k4.

Row 9: p4, mlp, k1, mlk, k4. (11 sts.)

Row 10: p6, k5.

Row 11: p5, mlk, k1, mlp, k5. (13 sts.)

Row 12: p5, k1, p2, k5.

Row 13: p5, k1, mlp, k1, mlk, pl, k5. (15 sts.)

Row 14: p5, k1, p2, k1, pl, k5.

Row 15: p5, k1, pl, mlp, k1, mlk, k1, pl, k5. (17 sts.)

Row 16: p5, k1, p3, k2, pl, k5.

Row 17: p5, k1, p2, mlk, k1, mlp, k2, pl, k5. (19 sts.)

Row 18: p5, k1, p2, k1, p2, k2, pl, k5.

Row 19: p5, pm, k1, p2, k1, pm, k1, pm, mlk, pm, pl, k2, pl, pm, k5. (20 sts.)

You've now created 6 sections. Reading through the last row, the first "p5" will form the leaf border, the following "k1, p2, k1" a cable, "k1" the main reverse stockinette section, the stitch from the "mlk" the turning ridge, "pl, k2, pl" a cable, final "k5" the second leaf border.

Body:

Row 1 (RS): p5, slm, k1, p2, k1, slm, pl, slm, pl, slm, work Row 1 of Chart B, sm, work Row 1 of Chart A.

Row 2 (WS): Work Row 2 of Chart A, slm, work Row 2 of Chart B, slm, k1, mlk, k to m, slm, k1, slm, work Row 1 of Chart B, slm, work Row 1 of Chart A.

Row 3: Work row 2 of Chart A, slm, work row 2 of Chart B, slm, pl, slm, p to next m, slm, work row 3 of Chart B, slm, work row 3 of Chart A.

Row 4: Work row 4 of chart A, slm, work row 4 of Chart B, slm, k1, mlk, k to m, slm, k1, slm, work row 3 of chart B, slm, work row 3 of Chart A.

Maintaining patt as set, increasing 1 st on every other WS row in main body portion as written, and following charts as set, work until there are 58 sts total.



Cascading Leaves Scarf

Begin Decreases:

Row 1: Work next row of Chart A, slm, work next row of Chart B, slm, pl, slm, p to next m, slm, work next row of Chart B, slm, work next row of of Chart A.

Row 2: Work next row of of chart A, slm, work next row of Chart B, slm, ssk, k to m, slm, k1, slm, work next row of chart B, slm, work next row of Chart A.

Work decrease rows as set until 1 st remains in center body section. (27 sts.)

Edge:

Row 1 (WS): removing all markers as you come to them, p8, k3, p2, ssk, k1, k2tog, p3, k6. (25 sts.)

Row 2: P6, k3, p5, k2, p3, k8.

Row 3: P8, k1, ssk, k1, k2tog, k1, p3, k6.

Row 4: p6, k3, p4, k1, p3, k8.

Row 5: p8, k3, ssk, k1, k2tog, p3, k6.

Row 6: p6, k3, p6, k8.

Row 7: p8, k2, ssk, k1, k2tog, p2, k6.

Row 8: p6, k2, p5, k8.

Row 9: p8, k1, ssk, k1, k2tog, k6.

Row 10: p6, k1, p4, p8.

Row 11: p8, ssk, k1, k2tog, k6.

Row 12: p9, k8.

Row 13: p2tog, p5, ssk, k1, k2tog, k5.

Row 14: p8, k6.

Row 15: p2tog, p3, ssk, k1, k2tog, k4.

Row 16: p7, k4.

Row 17: p3, ssk, k1, k2tog, k2.

Row 20: p5, k2.

Row 21: p1, ssk, k1, k2tog, k1.

Row 22: p4, k1.

Row 23: ssk, k1, k2tog.


Row 24: BO 3 rem sts.

Finishing: Weave in ends. Block piece to measurements.

CHART KEY

 P on RS, K on WS


 K on RS, P on WS

 C2L: slip one st to cn and hold in front, K1, K1 from cn

 K1f&b

 yarn over

 k2tog

 slip 1, knit 1, pass slipped st over

 slip 1, k2tog, pass slipped st over

 Bind off

CHART A - Leaf Border Pattern

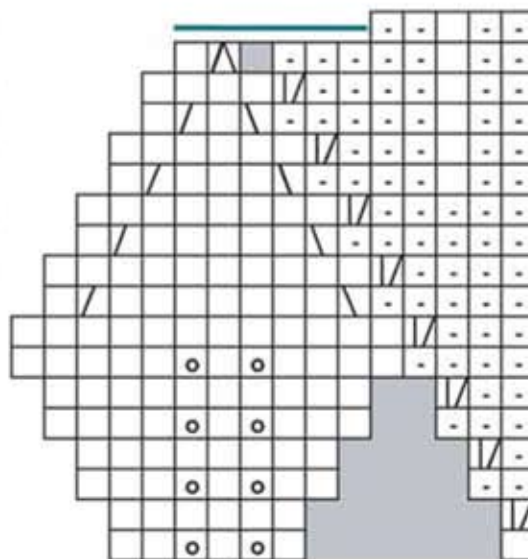


CHART B - Cable Pattern

