

BODKIN HAT & SCARF

MATERIALS

SCARF

- One skein of Rittenhouse (Two if making fringe)
- Size 8 Needles- or size needed to obtain gauge
- Stitch markers
- Row counter

HAT

- Size 9 16" circular needles or size needed to obtain gauge
- Size 7 16" circular needles
- Size 9 dpns
- Stitch markers
- Row counter



by Sara Cohen

GAUGE

SCARF

19 sts and 28 rows in 4 inch square (in pattern)

HAT

18 sts/24 rows in 4 inch square (in pattern)

PATTERN NOTE

On sizing: Both the hat and the scarf can be customized to the size you desire. For a wider scarf, add repeats of the outer four rows to either side.



BODKIN HAT & SCARF

SCARF PATTERN:

CO 30 stitches.

Repeat rows 1 - 8 of chart until scarf is desired length. BO in pattern.

Row 1: *k2, p2*

Row 2: *p2, k2*

Row 3: p1, *k2, p2* 3 times, k4, *p2, k2* 3 times, k1

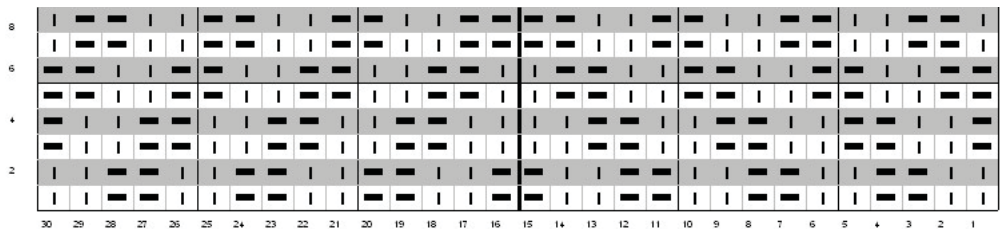
Row 4: k1, *p2, k2* 3 times, p4, *k2, p2* 3 times, p1

Row 5: *p2, k2* until 2 stitches remain, p2

Row 6: *k2, p2* until 2 stitches remain, k2

Row 7: k1, *p2, k2* 3 times, p4, *k2, p2* 3 times, p1

Row 8: p1, *k2, p2* 3 times, k4, *p2, k2* 3 times, k1



Finishing:

Cut sixty 20" long pieces of yarn. Using a crochet hook, draw center of one yarn piece through first stitch at cast on end. Pull ends of yarn piece through loop. Repeat for all stitches in cast on and bind off end. Trim to desired length.

HAT PATTERN:

Using smaller needle, CO 72 sts.

Join in the round, careful not to twist sts.

Mark beginning of round.

K1, P1 for 1 inch.

K2, M1 for one round.

Work chart for rounds 1-39

Tie ends through stitches.

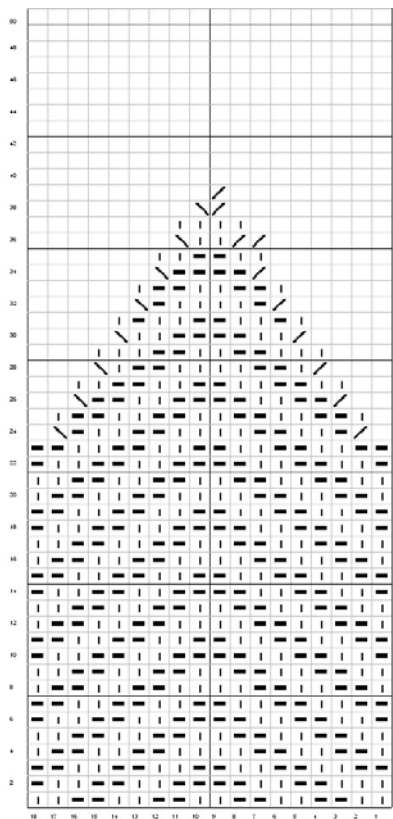


Chart Key

—	P
	K
/	k2tog
\	ssk